



**BIMagine Learning Framework**  
design powered by technology



Interiors  
Structural  
CAD Detailing  
Revit  
Career Growth  
Clash Detection  
Visualization  
3Ds Max  
Design  
Coordination  
AutocAD  
CD set  
Creativity  
Skill Development  
BIM Process  
Texturing & Lighting  
Estimation  
Architecture  
Rendering  
Space Design



Skill <sup>up</sup>  
**yourself.**

# About Us



Saurabh Kumar  
Founder & Director

- B.Tech Hons.in Civil Construction
- Work experience in leading MNCs of AEC industry.
- 8+ years of experience as digital design practice leader.
- Awarded by Indian Concrete Institute and Association of Consulting Civil Engineers, India for his work on BIM.
- Accomplished director offering cross-cultural team management skills. High-energy, results-oriented leader with an entrepreneurial attitude.

- **BIMagine Learning Frame (BLF)** was founded by Saurabh Kumar in 2019 soon after its parent company **BIMagine Global Studio (BGS)** was formed. Before BLF was formed, Saurabh used to give training as a freelancer. The purpose was to link the existing college curriculum to the industry's latest technology and tools. Saurabh learnt by his own experience that technologies like **BIM should be learnt parallel to the college studies** as it will create a strong base, so that students will not be a complete fresher after graduation.
- Apart from students and graduates, **BLF also help professionals** in upgrading themselves with latest BIM tools and other AEC software tools to meet the current market trends. This helps them to add the skills in their CV and open ways for better opportunities and be ahead in the competitive environment.
- BLF also provides **assistance to HR executives** of **Architectural and Engineering Companies** in providing trained and developed resources.

## About Parent Company - BIMagine Global Studio (BGS)

- **BGS is an Architectural and Engineering company** offering all types design solutions (architectural, structural and MEP) and virtual design construction (VDC) services which includes **BIM and CAD support to its overseas clients** to reduce their workload and enhance their productivity. We ensure that our clients spend minimum time on review cycles and get quality deliverables.
- BGS has an integrated team with the appropriate **mix of talent, creativity and expertise**. The team consists of project managers, architects, engineers and draftsmen who uses latest digital design tools and BIM process to deliver construction documents and digital models as per the client standards across all time zones.



info@bimaginelearning.com



www.bimaginelearning.com

## Why us?

- ✓ Link your studies with architectural and engineering software.
- ✓ Get updated with latest A/E industry trends.
- ✓ Add certificate/skillset to your CV.
- ✓ Customized training based on the requirements.
- ✓ Discounts for Students- “We know you’re the future nation builders”.
- ✓ Faculties are from top universities having MNCs work experiences.
- ✓ Increase your chance to crack interviews.
- ✓ Doubt solving facility available via remote control (Anydesk/Team viewer/Zoom/Hangout) or over phone call.
- ✓ Exclusive training for architectural and engineering students going to pursue Master degree in US.
- ✓ Specific training for A/E professionals to upgrade their skillset and meet the current market trends.
- ✓ High-end Computers with best professional environment.

## BIMagine Learning Frame is for :

### Students and Gr aduates

- Architectural Students
- Engineering Students  
(Civil,Mechanical,Electrical)
- ITI Certified Students
- Diploma Engineers and Architects

### Professionals

- Architects
- Engineers  
(Civil,Mechanical,Electrical)
- Interior Designers
- Technicians / Designers
- BIM Modelers
- 3D Modelers & Visualizers
- Freelancers

### Architectur al and Engg. Companies

- Hire trained and developed resources with excellent software skills.
- Save time in hunting for young talents.
- We provide customized training programs as per your company’s requirements.



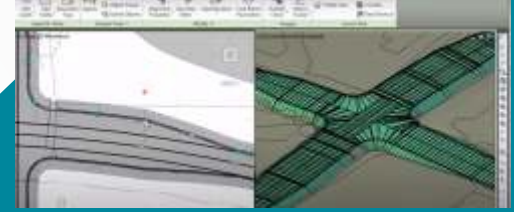
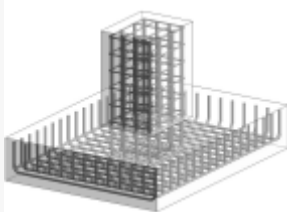
# Portfolio

“ Career and Passion  
Coming Together...”

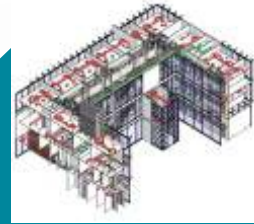
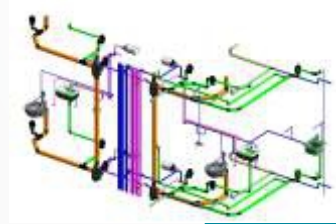
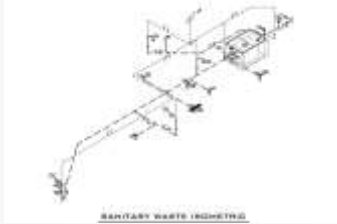
## Architectural & Interior



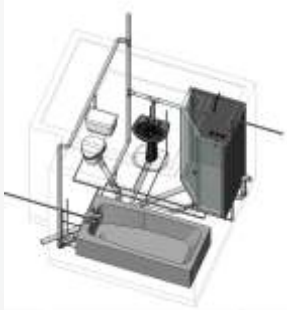
## Civil & Structural



## Building Services (MEP)



## Revit Family Creation



info@bimaginelearning.com

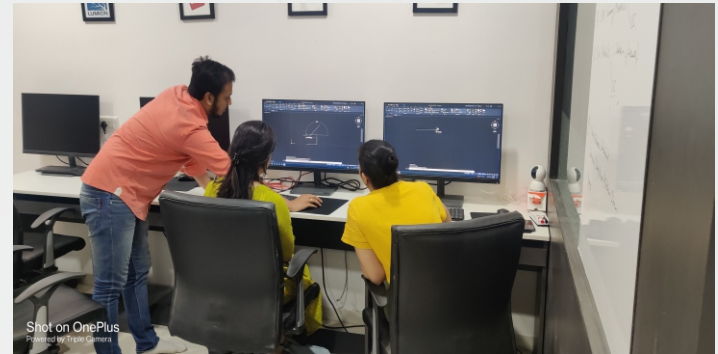


www.bimaginelearning.com

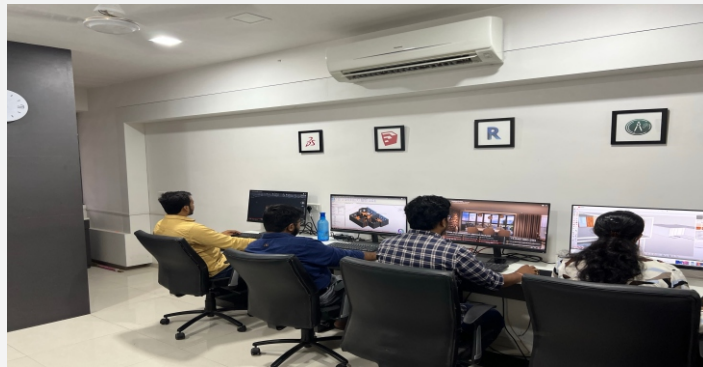
# Gallery



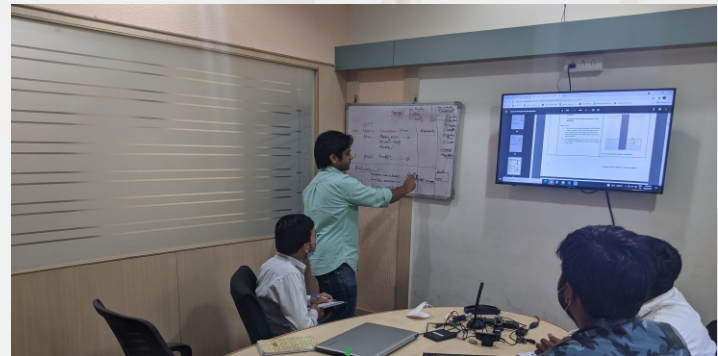
**Computers**



**Professional Trainers**



**Computer Lab**



**Doubt Solving Sessions**

“we have everything covered for your training needs, you just need to focus on training sessions.”



# Start **Early** , Update **Timely** = Be **Ahead!**



## 01 Enrollment

- Registration
- Understanding Requirements
- Setting up Training Schedule
- Login ID generation



## 02 Technical Training

- Discussing Architectural and Engineering Concepts so that everyone should be on the same track.
- Expert Lectures
- Technical Quiz



## 03 Software Training

- Software Learning Classes
- Doubts clearing session
- Self Practice Sessions



## 04 Certification & Thanksgiving

- BIMagine Internal Test and Certification
- Autodesk Online Test and Certification
- Books and CDs (Study Material)
- Signing off and thanksgiving gifts.



# Key - Trainers



- Alka has got a rich experience in implementing BIM in high-rise residential projects under L&T in Mumbai.
- She has a remarkable contribution in leading MNCs (AEC sector) in Gujarat in improving documentation process and quality control
- With 8+ years of BIM Modeling and BIM Coordination using Revit, she loves to deliver her learnings to BIMagine Learning Frame.

## Alka Tripathi

*Training Head/Architectural BIM Modeling Expert*



# Key - Trainers

- Saurabh shares his knowledge to understand the project data and then to translate that data into parsable information and then preparing data rich BIM models spanning from conceptual phase, through construction, and into facility management.
- He also provide support in linking on site construction process with virtual design construction process.

## Saurabh Kumar

*Structural / Civil / MEP / On-Site BIM*

*(CEPT Alumni)*





# Trainers



Having graduation in Architecture, Pathik has fresh perspective of what latest tips and tricks can be used in softwares like AutoCAD, SketchUp, Lumion, etc. He has experience of working in Architecture, interior as well as out-sourcing projects. Being part of teams of designers as well as site coordinators, he knows how to utilise softwares to better communicate designs with clients and different agencies.

He is an Architect and Urban Planner efficient in handling architectural and planning software. He is currently enriching his career on the various out sourced projects in Bimagine Global Studio understanding managing delivering through virtual design process to the overseas clients with their requirements.



## Revit Architecture Basic

- Introduction to BIM and Autodesk Revit
- Project Setup
- Revit Interface
- Basic Drawing and Modify Tools
- Setting Up Levels and Grids
- Importing and Linking Files
- Rooms and Areas
- Modeling Walls
- Working with Doors and Windows
- Working with Curtain Walls
- Working with Views
- Adding Components
- Modeling Floors
- Modeling Ceilings
- Modeling Roofs
- Modeling Stairs, Railings, and Ramps
- Site and Topography
- Creating Construction Documents / Sheet Setup
- Annotating Construction Documents
- Adding Tags and Extracting Schedules
- Creating Details
- Introduction to Work sets
- Furniture Layout
- Basic Revit Family Creation
- **Best practices in Revit Architecture**

## Revit Architecture Advance

- Creating In-Place Family
- Groups
- Worksharing & Collaboration
- Phases
- Design Options
- Creating Assemblies
- Managing Projects
- Creating Walkthrough
- Creating Advance Families
- Sun Setting
- Project Coordination
- Model coordination & Clash Detection
- Advanced Quantity Extraction
- Advance Family Creation
- Massing
- Modifying Wall (Wall Sweep and Reveal)
- View Templates
- Area Calculation
- Point Cloud Modeling
- **Best practices in Revit Architecture**

## 3DS Max Syllabus

- Getting to Know 3ds Max
- Introducing 3DS MAX Objects
- Polygon Modeling
- Creating Shapes with Splines
- Editing Meshes and Creating Complex Objects
- Working with External Design Data
- Creating AEC Objects
- Organizing and Editing Objects
- Light and Shadow
- Shading and Texturing
- UVW mapping
- UVW unwrap
- Using Camera
- Creating Animations
- Mental Ray Concepts
- Gamma Correction
- Assigning and creating Materials
- Vray Rendering
- Scanline render
- Mental ray render
- Corona render
- **Best Practices in 3DS Max**

 All Courses include Understanding of Construction Drawings

# FOR ARCHITECTS & INTERIOR DESIGNERS



info@bimaginelearning.com



www.bimaginelearning.com

## Lumion Syllabus

- Starting a project – Project Setup, Screen Layout
- Controlling the Camera
- Modeling Environment and Modifying Terrain
- Adding a Water Plane and/or Ocean
- Importing – Updating Models with Geometry
- Placing Content from the Library
- Using Layers
- Assigning and Modifying Materials
- Saving Material Sets
- Advanced Materials (Glass, Waterfalls, Self-Illumination, Glows)
- Environment Settings
- Setting Sun Direction and Height
- Cloud Setting
- Adding / Modifying Light Fixture
- Creating Still Images
- Creating Animations
- Animating Objects
- Camera Presets
- Creating a camera Pan
- Working with Filters
- Adding Special Effects to Individual clips and entire movies
- Using Theater Mode Export and Rendering Options
- Rendering the final output as a movie file.
- **Best practices in Revit**

## SketchUP Syllabus

- What is sketchup
- How to get around inside sketchup
- Push pull ,Zoom, follow me ,pan and rotate commands
- Understanding the XYZ axis
- Applying templates
- Drawing and using the pencil tool
- Drawing basic geometric shape with measurements
- Drawing circles and arcs
- Discovering tags (previously called layer)
- Simple Array techniques
- Making components and groups
- Creating a digital warehouse
- Modeling techniques
- Copy and offset faces, edges and polygons
- Paint bucket
- Materials Editor
- Textures and bitmaps
- Create new scenes and styles
- Setting up camera and making animation
- Annotation inside SketchUP
- Printing from SketchUP
- Exporting 2D images or PDF
- **Best Practices in SketchUP**

## US Architectural Package

- Introduction to US Architectural Terminologies
- US Construction Methodology
- Architectural Elements and their joinery details.
- Understanding Structural Drawings and Coordination
- Understanding and setting up Construction Documents Set
  - ⇒ Site Plan
  - ⇒ Demolition
  - ⇒ Existing Floor Plan
  - ⇒ Proposed Floor Plan
  - ⇒ Reflected Ceiling Plan
  - ⇒ Life Safety Plan
  - ⇒ As-Built Drawings
  - ⇒ Building Elevations
  - ⇒ Wall Sections
  - ⇒ Enlarge Restroom Plans
  - ⇒ Building Sections
  - ⇒ Millwork Details
  - ⇒ Door and Window Schedules
- Architectural Presentation
- Understanding BIM
- LOD Specifications
- Quality Control
- **Basic Revit**

 All Courses include Understanding of Construction Drawings

# FOR ARCHITECTS & INTERIOR DESIGNERS



info@bimaginelearning.com



www.bimaginelearning.com

## Revit Structural Syllabus

- Introducing Revit Structure
- Project Setup
- Creating Grids and Levels
- Importing and Linking Files
- Structural Wall
- Column ,Beam , Slab Modeling
- Creating Beam System
- Different types of foundation
- Creating Openings
- Stairs Modeling
- Reinforcement Placement
- Placing Truss
- Creating Construction Documents / Sheet Setup
- Annotating Construction Documents
- Manging Project
- Creating Sections in Revit Structure
- Extracting Schedule/ Quantities
- Structural Family Creation
- Rendering the Projects
- Final Printing and Publishing
- Point Cloud Modeling
- **Best practices in Revit Structure**

## Revit MEP

- Introduction to BIM and Autodesk Revit
- Project Setup
- Revit Interface
- Basic Drawing and Modify Tools
- Adding grids and Levels
- Linking and importing files
- View Templates and Visibility Graphics
- Model Views
- Adding Mechanical Equipment and air terminal
- Adding Ducts and creating duct system
- Adding Duct fittings and duct accessories
- Defining spaces and zones
- Adding pipes and creating pipe system
- Adding pipes accessories and fittings
- Adding plumbing fixtures
- Extracting Clash/Conflict Report
- Creating Electrical System
- Adding electrical component, lighting fixture and electrical equipment.
- Creating panel schedule and electrical circuits
- Adding wiring, laying cable tray and conduits.
- Creating Construction Documents / Sheet Setup
- Annotating Construction Documents
- Adding Tags and Extreacting Schedules
- Creating Details
- Worksharing and Collaboration in Revit
- MEP Family Creation
- Printing Setup
- Point Cloud Modeling
- **Best practices in Revit MEP**

## AutoCAD Syllabus

- Introduction to AutoCAD interface.
- Unit Settings
- Creating basic Plan, Elevation, Section and details
- Use of Text, Mtext & Layers in Documentation
- Apply Hatch & Gradient
- Layer Management
- Creating Tables and linking with Excel
- Dimensioning in drawings with tolerance
- Model Space ,paper space and layouts
- Blocks and Dynamic Blocks
- Adding external References
- Creating plans such as architectural plan, structural foundation and framing plan, electrical plans , site plan , centreline plans as per the requirement.
- Door and window schedules
- Furniture Layout
- Staircase Drawings
- Plotting Drawings
- **Best practices in AutoCAD**

 All Courses include Understanding of Construction Drawings

# FOR ENGINEERS & PROJECT MANAGERS



info@bimaginelearning.com



www.bimaginelearning.com

## Navisworks Syllabus

- Introduction to BIM and 4D and 5D
- Introduction to Naviswork Manage and its interface
- Navisworks Files types
- Linking different files
- Selecting, Controlling, and Reviewing Objects
- Viewpoints, Sections, and Animations
- Working with Time liner
- Working with Animator and Scriptor
- Quantification
- Clash Detection
- Scriptor
- Rendering
- **Best Practices in Navisworks**

## BIM Process & BIM Management

- About BIM and Basics
- Benefits of BIM for owners, architects,engineers and contractors..
- Levels of BIM
- Lean BIM
- LOD Specifications
- Managing CAD and BIM Standards
- Integrated Project Delivery (IPD)
- BIM Tools
- Managing BIM Team
- Understanding Modeling Requirements
- Creating Scope of Work
- BIM Execution Plan (BEP)
- BIM Dimensions
- BIM 360 Docs
- Phase Planning
- Reviewing Drawings using Checklist
- Managing Revit Projects
- Learning Navisworks

## Quantity Surveying & Estimation using BIM (Must for Contractors)

- What is Estimation and its types?
- Quality of Good Estimator
- QS using traditional method vs using BIM.
- Measurement units and rules for measurement
- Understanding BIM QS templates.
- Calculating Quantities for :
- Earthwork
- Foundation
- Brickwork
- All RCC Elements (formwork,reinforcement,concreting)
- Doors and Windows
- Finishing Materials
- Labour Rates,Market Rates,Schedule of Rates
- Rate Analysis
- Generating Reports

 All Courses include Understanding of Construction Drawings

# FOR ENGINEERS & PROJECT MANAGERS



info@bimaginelearning.com



www.bimaginelearning.com

# Shining Stars



**Arpit Kanv**

BIM Coordinator  
(Mechanical Engineer)

“ I came across Saurabh and BIMagine during my final year of B.Tech (CEPT University). While I was struggling with my thesis Saurabh guided me not only with my thesis topic but also with the concept of point cloud, with my limited knowledge of BIM. I approached him and his guidance and valuable insight of the BIM helped me really understand BIM apart from software aspect. I presented my work '**Process and benefits of point cloud in HBIM**' in the **ICOMOS** symposium 2020 and was rated 6th among all papers. Professionalism and work ethics are synonym to Saurabh and that is the environment of BIMagine which will not just help with learning of concept but an overall development. ”



# Shining Stars



**Yogesh Kalal**  
Associate Consultant

“ After pursuing my graduation from Mechanical Engineer, I met Saurabh and under his guidance I came to know about the BIM process and Revit. I upgraded my skills and linked my college studies with Revit environment. Initially I worked with few companies in Ahmedabad later on I got opportunity to **work in Singapore as a BIM Coordinator**. I got the chance to work in **Airport and Metro projects (Land & Transport Authority - Singapore)**.

I am really thankful to Saurabh and BIMagine team who are working hard to shape the future of young talents , who really wants to work with technology to apply core engineering. ”



It is **Possible** To Fly Without **Motors** But Not Without **Knowledge & Skill**



**CONTACT  
US**



**BIMagine Learning Frame**

design powered by technology

**FOLLOW  
US ON**



CGF-02 , Aakash Building , SG Highway  
Sarkhej, Ahmedabad 382210

[www.bimaginelearning.com](http://www.bimaginelearning.com)

[info@bimaginelearning.com](mailto:info@bimaginelearning.com)

 **8401550427**